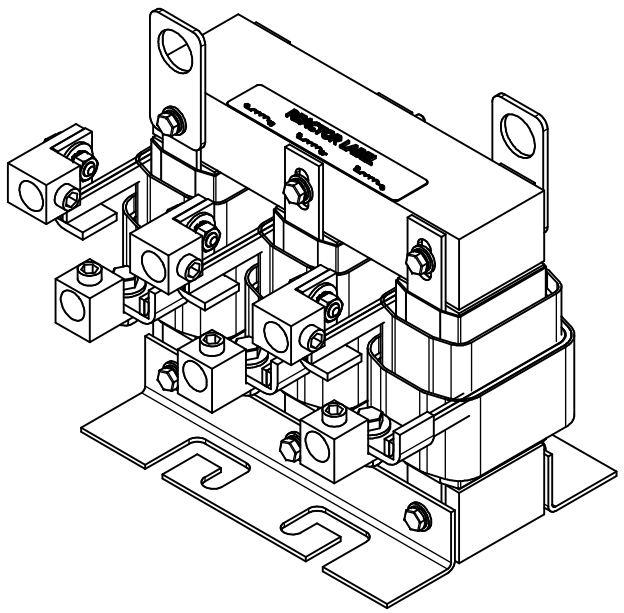
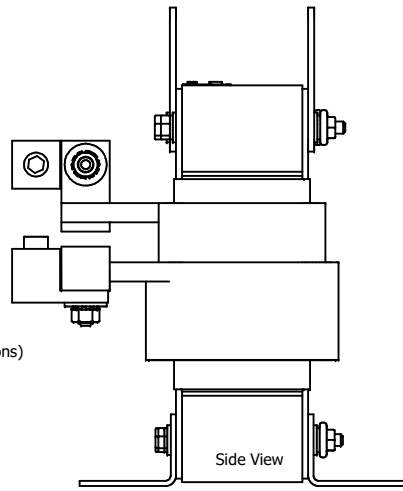
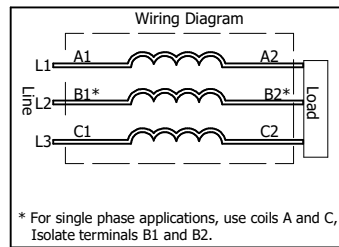


(Customer Connections) Markings On Coils For Reference Only.



480 Rated Voltage, 600 Max Voltage, High Z, Impedance.						
Part Number	Horsepower (HP)	Motor Amps (A)	Maximum Amps (A)	Inductance (uH)	Weight (LBS)	Attached Lug Kit
KDRULG1H	150	180	185	181	62	LK11



* For single phase applications, use coils A and C, Isolate terminals B1 and B2.

TCL (800) 824-8282 transcoil.com

TCL, LLC
 Germantown, WI, USA
transcoil.com
 800-824-8282

KDRUL Drive Reactor
 KDRUL — Motor Amps —
 SPH, 50/60Hz, —V Rated, 600V Max, —A Max
 40C Amb Max, 155C Rise, Ref 15
 Term Torque — B-In

UL LISTED
 2500 500V, 1P, 250A

DATE CODE: A1 L1 A2 B1 L2 B2 C1 L3 C2

1. UL file number: cULus Listed File E116124.
2. KDR Drive Reactors Comply With The Thermal and Altitude Standards Set Forth by NEMA ST20-1992.
3. For Terminal Torques And Wire Size See, KDR IOM Manual, Part Number 30895
4. NEC Current For 208/240 Volts, Horsepower Based On 208 Volts.
5. Material(s) Shall be RoHS Compliant
6. Customer Is Responsible For Installation To Meet All National And Local Electrical Codes.

TCL, LLC CLAIMS PROPRIETARY RIGHTS IN THE MATERIAL HEREIN DISCLOSED. IT IS SUPPLIED WITHOUT PREJUDICE TO ANY PATENT RIGHTS OF TCL AND MAY NOT BE REPRODUCED OR USED TO MANUFACTURE ANYTHING SHOWN THEREIN WITHOUT WRITTEN PERMISSION FROM TCL.

TOLERANCES (EXCEPT AS NOTED)			
DECIMAL			
	.XX	± .25	
	.XXX	± .10	
FRACTIONAL			
	± 1/16		
ANGULAR			
	± 1°		

TCL W132 N10611 Grant Drive
 Germantown, WI 53022

KDR G Frame, Copper Bus
 Reactor Drawing

DRN BY: DSW DATE: 12/19/19 107533DG
 SCALE: 1/2 DRWING: JSC SHEET 8 OF 8

NO	REVISION	DATE	BY
B	5013, DWG was Sheet 4	2/25/19	DSW
A	Combine Drawings		DSW